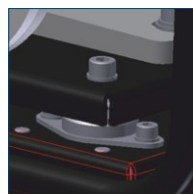




High-pressure centrifugal fans, driven by an internal combustion engine. The impeller is riveted from aluminum sheet metal and features B-type blades. Impellers made of acid-resistant sheet metal are available upon request. The fan housing is made of aluminum alloys. The fans are designed for the transport of non-corrosive and non-explosive gases free of contaminants. The frame and fan base are made of sheet metal and steel tubing. The fans can be moved either on pneumatic, inflatable wheels with brakes or by lifting them using additionally installed handles. The fan, together with the motor, is mounted on a plate separated from the frame by vibration isolators. The fan is also equipped with an operating hour counter and a tachometer, which allows monitoring of the fan's operating time and speed.



Connectors for easy hose connection



Vibration isolators



Hour meter and tachometer for monitoring the internal combustion engine



Container for essential tools when operating the fan



Pneumatic wheels for easy transporting the fan

Technical data for fans

Type	Fan speed [rpm]	Max. flow rate [m ³ /h]	Max. total pressure [Pa]	Sound pressure level* [dB(A)]	Operating time with a full tank [h]	weight [kg]	dimensions L x W x H [mm]	motor model
HPE-100-035HP	6000	900	4500	74	2	86	800x694x817	Honda GX120
HPE-200-079HP	6000	1900	10,500	75	2.4	110	1050x694x1017	Honda GX240
HPE-260-084HP	6000	2500	10,000	77	2.2	112	1050x694x1017	Honda GX270
HPE-300-117HP	5000	3600	9900	79	1.7	124	1100x750x1070	Honda GX390

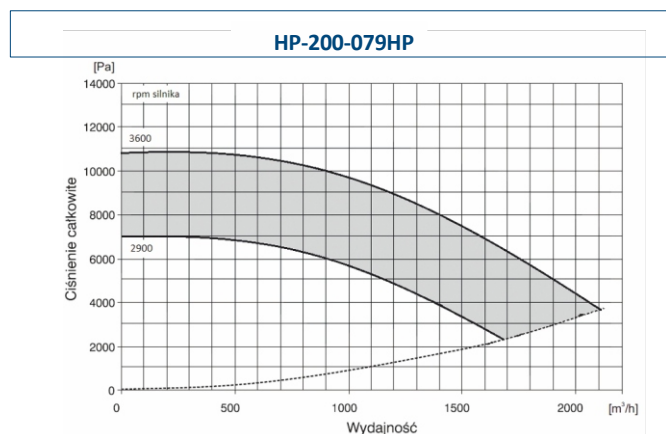
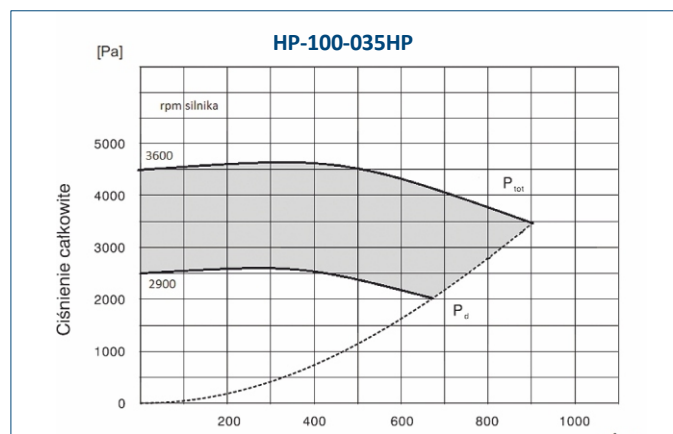
* Sound pressure level measured at a distance of 20 m in an open area, at full engine speed and with an ambient background noise level of 49 dB(A)

Technical specifications of internal combustion engines

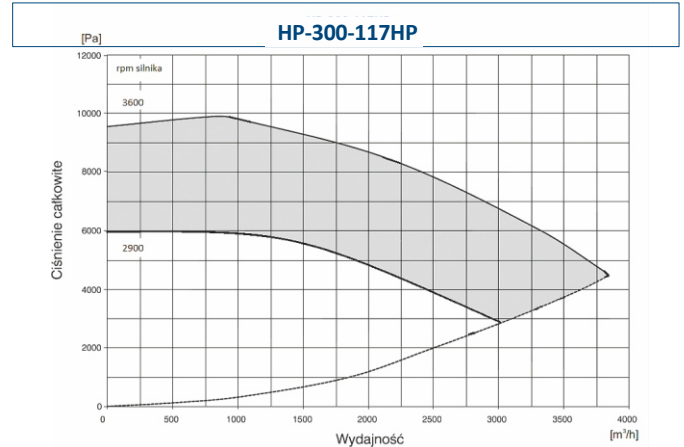
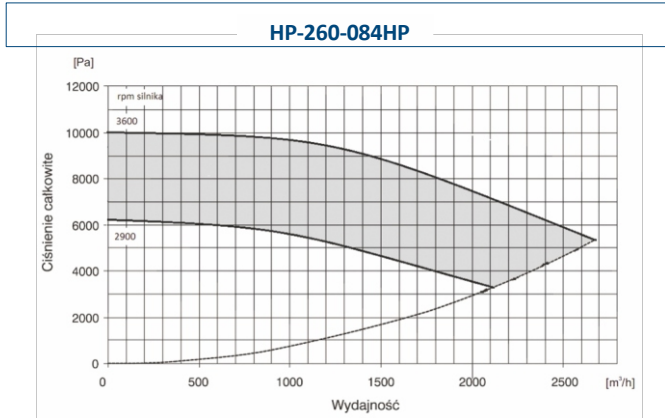
Engine model	Displacement [cm ³]	Bore x stroke [mm]	Max. power at 3600 rpm [kW/HP]	Max. torque at 2500 rpm [Nm]	Ignition system	starting	fuel tank capacity [l]	oil pan capacity [l]	dimensions L x W x H [mm]	weight [kg]
Honda GX120	118	60x42	2.6/3.5	7.3	electronic	manual	2.0	0.6	305x341x329	13.0
Honda GX240	270	77x58	5.9/7.9	18.3	Electronic CDI	manual	5.3	1.1	381x428x422	25.8
Honda GX270	270	77x58	6.3/8.4	19.1	Electronic CDI	manual	5.3	1.1	381x428x422	25.8
Honda GX390	389	88x64	8.7/11.7	26.5	Electronic CDI	manual	6.1	1.1	406x460x448	31.7

* option: electric starter. GX series engines are four-stroke, overhead valve (OHV), air-cooled engines with a horizontal crankshaft.

Performance characteristics

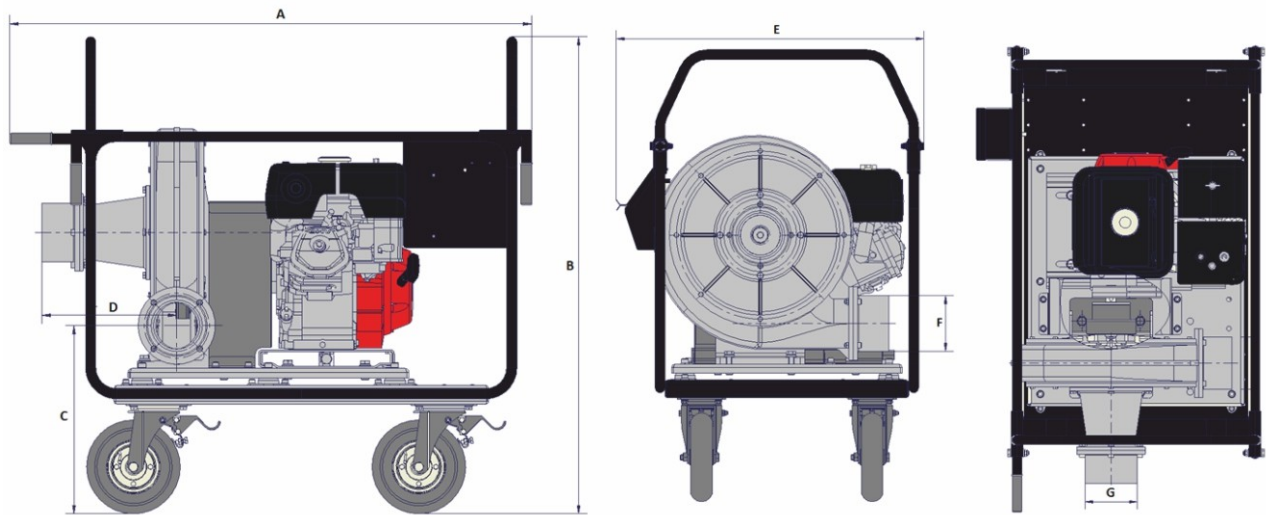


Charakterystyki pracy



Dimensions

HPE-200-079HP and HPE-260-084HP



Type	A	B	C	D	E	ØF	ØG
HPE-100-35HP	1000	820	360	280	694	100	100
HPE-200-79HP	1250	1020	401	290	694	125	125
HPE-260-84HP	1250	1020	401	290	694	125	125
HPE-300-117HP	1250	1020	401	290	750	125	125